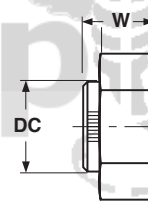
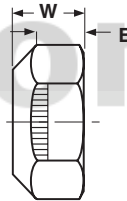
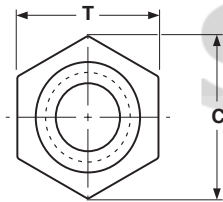


DIN 980V & ASME B18.16.3
Prevailing Torque

NUTS



Volcano-type

Hex Collar-type

METRIC--PREVAILING-TORQUE TYPE STEEL HEX NUTS								DIN 980V
Nominal Size	Thread Pitch	T		C	B	DC	W	
		Width Across Flats		Width Across Corners	Wrenching Height	Collar Diameter	Thickness	
		Max	Min	Min	Min	Nom	Min	
M6	1.00	10.00	9.78	11.05	3.3	-	6	5.7
M8	1.25	13.00	12.73	14.38	4.4	-	8	7.5
M10	1.25	17.00	16.73	18.90	5.5	-	10	9
M12	1.50	19.00	18.67	21.10	6.6	-	12	11
M20	2.50	30.00	29.16	32.95	11	27.5	20	18

METRIC--PREVAILING-TORQUE TYPE STEEL HEX NUTS							ASME B18.16.3M
Nominal Size	Thread Pitch	T		C		W	
		Width Across Flats		Width Across Corners		Thickness	
		Max	Min	Max	Min	Max	Min
M6	1.00	10.00	9.78	11.55	11.05	5.9	5.4
M8	1.25	13.00	12.73	15.01	14.38	7.10	6.44
M10	1.50	16.00	15.73	18.48	17.77	9.00	8.04
M12	1.75	18.00	17.73	20.78	20.03	11.60	10.37
M24	3.00	36.00	35.00	41.57	39.55	23.00	20.20

Description	An all-metal, one-piece hex nut which derives its prevailing torque characteristics from controlled distortion of its top threads from their normal helical form to a more elliptical shape.
Applications/Advantages	These nuts are reusable. Can withstand severe vibration and shock loads. Frequently used in farm machinery, plus the automotive and related metalworking industries.
Material	Nuts shall be made from a low-carbon steel which conforms to the following chemical composition requirements-- <i>Carbon: 0.58% max.; Manganese: 0.27% min.; Phosphorus: 0.048% max.; Sulfur: 0.058% max. (0.24% max if milled from the bar).</i>
Heat Treatment	Nuts are heat treated to meet the mechanical and performance requirements noted on this page.
Hardness	Rockwell C26 - C36
Proof Load	<i>M3 through M10: 1040 MPa M12 through M16: 1050 MPa M20 through M36: 1060 MPa</i>
Plating	Parts are typically supplied with a cadmium and wax finish; see Appendix-A for additional information.