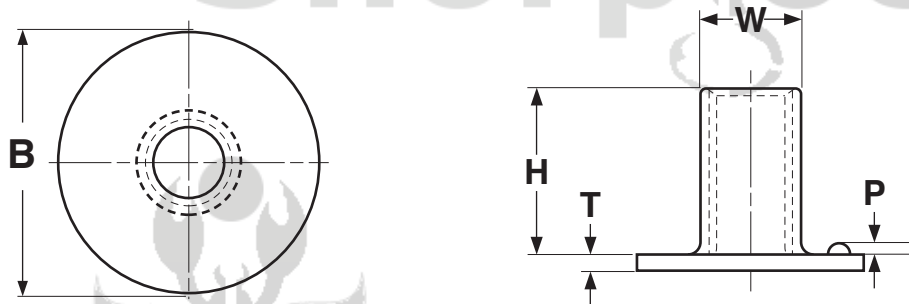


ROUND BASE - WITH PROJECTIONS



ROUND BASE WELD NUTS WITH PROJECTIONS

Part Number	Thread Size	H		W		B		N	P		T	
		Barrel Height		Barrel Diameter		Base Diameter		Projection Width	Projection Height		Material Thickness	
		Max	Min	Max	Min	Max	Min	$\pm 1/32$	Max	Min	Max	Min
0804NWRP	8-32	.281	.219	.224	.194	.750	.688	7/64	.046	.016	.046	.016
10093NWRP	10-24	.312	.250	.258	.228	.781	.719	7/64	.054	.024	.054	.024
11093NWRP	10-32	.312	.250	.258	.228	.781	.719	7/64	.054	.024	.054	.024
1405NWRP	1/4-20	.344	.281	.320	.290	.781	.719	7/64	.054	.024	.062	.032
1407NWRP	1/4-20	.469	.406	.320	.290	.781	.719	7/64	.054	.024	.062	.032

Description	Internally threaded barrel-shaped fasteners integrally formed with a circular, flat base that has three dome-shaped protrusions on its top side.
Applications/ Advantages	An economical welding fastener used when it is necessary to restrict the nut from rotating when tightened.
Material	Cold rolled steel